



## Wireless Antenna



TEW-IA04O 4.0 dBi 2.4GHz ISM Band Omni Directional Antenna (with Reverse SMA Connector)  
TEW-IA04O  
4 dBi Omni Indoor Antenna  
TRENDnet's TEW-IA04O Omni Antenna provides more power and farther distance range for your wireless network. As an optional antenna for your IEEE 802.11b/g 2.4GHz wireless network equipments, it improves signal strength/signal quality and increases the coverage area. You can simply place the antenna on level surface or secure it on the wall. Unleash the power of your wireless products with TRENDnet's TEW-IA04O antenna. Will work with any brand with Reverse SMA Male Connector!

ราคา 2,000 บาท



TEW-IA06D 6 dBi Directional Indoor Antenna  
TEW-IA06D  
6 dBi Directional Indoor Antenna  
TRENDnet's TEW-IA06D Directional Antenna provides more power and farther distance range for your wireless network. As an optional antenna for your IEEE 802.11b/g 2.4GHz wireless network equipments, it improves signal strength/signal quality and increases the coverage area. You can simply place the antenna on level surface or secure it on the wall. Unleash the power of your wireless products with TRENDnet's TEW-IA06D antenna. Will work with any brand with Reverse SMA Male Connector!

ราคา 2,500 บาท



TEW-OA08OK 8dBi Outdoor Omni-Directional Antenna Kit  
TEW-OA08OK  
8dBi Outdoor Omni-Directional Antenna Kit  
TRENDnet's TEW-OA08OK Outdoor Omni Directional Antenna Kit increases the coverage area of your wireless network. As an optional antenna for your 2.4GHz IEEE 802.11b and 802.11g wireless network equipments, you can install it indoor or outdoor to extend the coverage area. The antenna can simply be mounted on the wall or on a pole. This antenna kit comes antenna, metal bracket, hardware, and 2 meters (6 ft.) antenna cable. You can install the kit on any brand's 2.4GHz wireless devices with Reverse SMA Male antenna connector.

ราคา 6,500.00 บาท



TEW-OA14DK 14dBi Outdoor Directional Antenna with 6ft. (2M) Reverse SMA Cable (with bracket mounting)  
TEW-OA14DK  
14dBi Outdoor Directional Antenna with 6ft. (2M) Reverse SMA Cable (with bracket mounting kit)  
TRENDnet's TEW-OA14DK Outdoor Directional Antenna provides long distance point-to-point connection for your wireless network. As an optional antenna for your IEEE 802.11b/g 2.4GHz wireless network equipments, you can install it outdoor for connecting a network up to miles away, or install it in a building to blast through obstructions by mounting it on the ceiling, wall, or outdoor tower. Unleash the power of your wireless products with TRENDnet's TEW-OA14DK antenna.

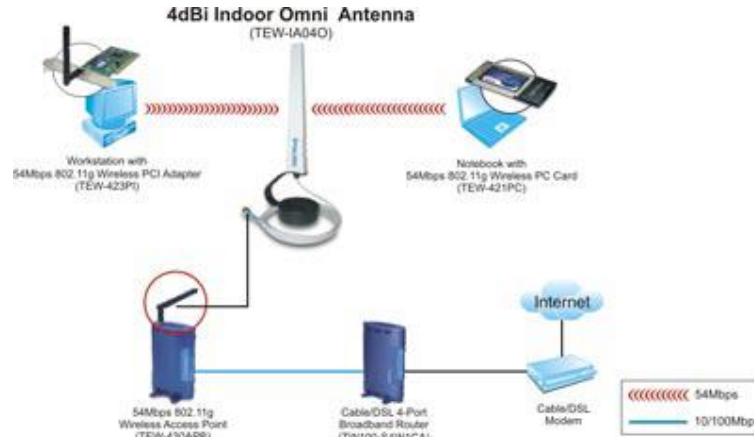
ราคา 8,200.00 บาท



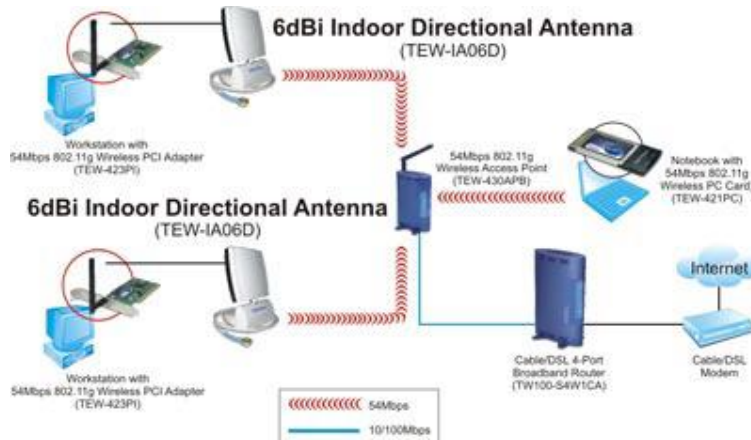
TEW-OA24D 24dBi Outdoor Directional Antenna  
TEW-OA24D  
24dBi Outdoor Directional Antenna  
TRENDnet's TEW-OA24D 24dBi High Gain Outdoor Reflector Grid Antenna provides extended coverage range for your existing 802.11b or 802.11g Wireless Local Area Network (WLAN). TEW-OA24D comes with female N-type antenna connector; with optional conversion cable (N-type to reverse SMA), you can connect the antenna to TRENDnet's TEW-303PI, TEW-310APBX, TEW-403PI, TEW-410APB, TEW-411BRP or any other 2.4 ~ 2.5GHz wireless device with male Reverse SMA connector. TEW-OA24D is weatherproofed; you can mount it outdoor on the wall or on a pole. The antenna also has a tilted bracket for antenna alignment. Expand the power of your wireless product with TRENDnet's TEW-OA24D.

ราคา 12,900.00 บาท

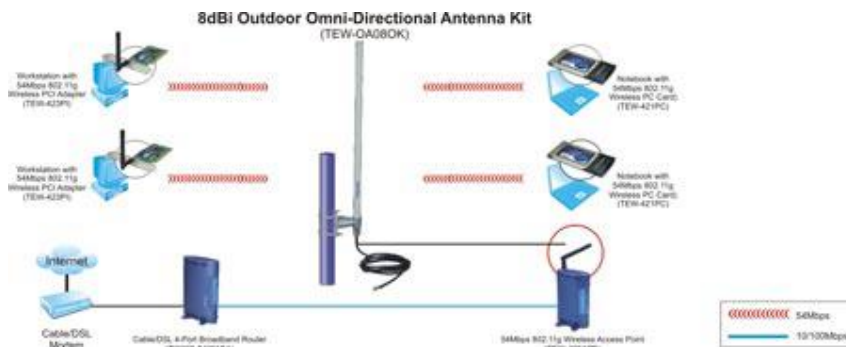
สนใจ สอบถามรายละเอียดเพิ่มเติม กรุณาติดต่อ  
บริษัท เอส-วัน เทคโนโลยี จำกัด โทร. 02-991-6962 มือถือ 06-789-7434  
Email: [kitti@sone.co.th](mailto:kitti@sone.co.th)



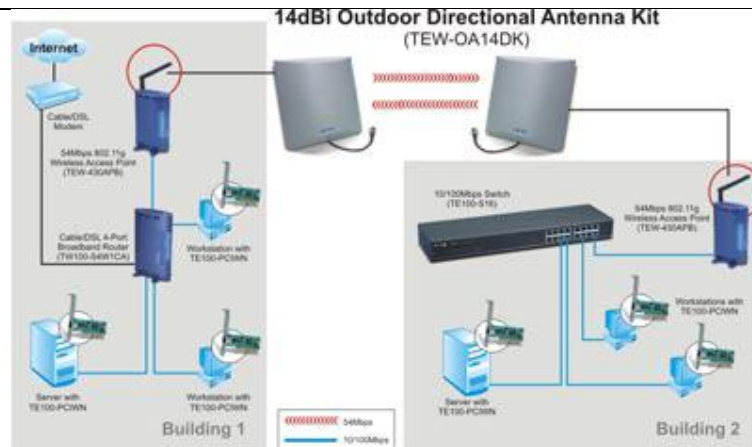
TEW-IA040 4.0 dBi 2.4GHz ISM Band Omni Directional Antenna (with Reverse SMA Connector)



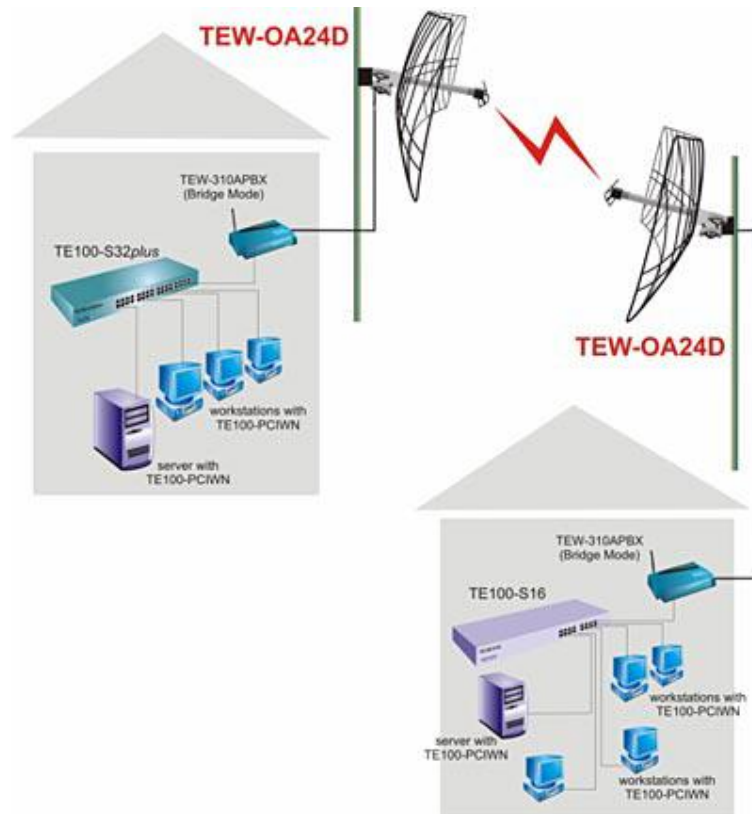
TEW-IA06D 6 dBi Directional Indoor Antenna



TEW-OA080K 8dBi Outdoor Omni-Directional Antenna Kit



TEW-OA14DK 14dBi Outdoor Directional Antenna with 6ft. (2M) Reverse SMA Cable (with bracket mounting)



TEW-OA24D 24dBi Outdoor Directional Antenna

สนใจ สอบถามรายละเอียดเพิ่มเติม กรุณาติดต่อ  
 บริษัท เอส-วัน เทคโนโลยี จำกัด โทร. 02-991-6962 มือถือ 06-789-7434  
 Email: [kitti@sone.co.th](mailto:kitti@sone.co.th)



### TEW-IA040 - 4 dBi Omni Indoor Antenna

TRENDnet's TEW-IA040 Omni Antenna provides more power and farther distance range for your wireless network. As an optional antenna for your IEEE 802.11b/g 2.4GHz wireless network equipments, it improves signal strength/signal quality and increases the coverage area. You can simply place the antenna on level surface or secure it on the wall. Unleash the power of your wireless products with TRENDnet's TEW-IA040 antenna. Will work with any brand with Reverse SMA Male Connector!

#### Specifications

##### Hardware

Frequency range: 2400 MHz - 2500MHz

Gain: 4 dBi

VSWR: 2.0 : 1 Max.

Polarization: Linear, Vertical

HPBW / horizontal: 360°

HPBW / vertical: 40°

Power handling: 20 W (cw)

Impedance: 50 Ohms

Connector: Reversed Female SMA Plug

Cable: ULA-316; 100 cm (3.3 ft)

Weight: 180 g (7 oz.)

Temperature: -10° C ~ 55° C (14° F ~ 131° F)

Humidity: 95% at 25° C (77° F)

Warranty: 1 Years

Certification: CE, FCC

---

### TEW-IA06D- 6 dBi Directional Indoor Antenna

TRENDnet's TEW-IA06D Directional Antenna provides more power and farther distance range for your wireless network. As an optional antenna for your IEEE 802.11b/g 2.4GHz wireless network equipments, it improves signal strength/signal quality and increases the coverage area. You can simply place the antenna on level surface or secure it on the wall. Unleash the power of your wireless products with TRENDnet's TEW-IA06D antenna. Will work with any brand with Reverse SMA Male Connector!

#### Specifications

##### Hardware

Frequency range: 2400 MHz - 2500MHz

Gain: 6 dBi

VSWR: 1.5 : 1 Max.

Polarization: Linear, Vertical

HPBW / horizontal: 80°

HPBW / vertical: 80°

Front to back ratio: 12 dB

Power handling: 20 W (cw)

Impedance: 50 Ohms

Connector: Reversed Female SMA plug

Cable: ULA-316 ; 100 cm (3.3 ft)

Weight: 110 g (4 oz.)

Temperature: -10° C ~ 55° C (14° F ~ 131° F)

Humidity: 95% at 25° C (77° F)

Warranty: 1 Years

Certification: CE, FCC

---



TEW-OA08OK - 8dBi Outdoor Omni-Directional Antenna Kit

TRENDnet's TEW-OA08OK Outdoor Omni Directional Antenna Kit increases the coverage area of your wireless network. As an optional antenna for your 2.4GHz IEEE 802.11b and 802.11g wireless network equipments, you can install it indoor or outdoor to extend the coverage area. The antenna can simply be mounted on the wall or on a pole. This antenna kit comes antenna, metal bracket, hardware, and 2 meters (6 ft.) antenna cable. You can install the kit on any brand's 2.4GHz wireless devices with Reverse SMA Male antenna connector

Specifications

Hardware

- Frequency range: 2400 MHz ~ 2500MHz
- Gain: 8 dBi
- VSWR: 2.0 : 1 Max.
- Polarization: Linear, Vertical
- HPBW/horizontal: 360°
- HPBW/vertical: 15°
- Power Handling: 50 W (cw)
- Impedance: 50 Ohms
- Connector Type (Included): N-Type Female
- 2m(6ft.) HDF-200 (TEW-2000F)

Antenna Cable Type: N-Type male to Reversed SMA Female  
Attenuation: 1.1dB

Antenna Cable (Optional): 8M (26 ft.) HDF-200 (Model# TEW-8000F)  
Attenuation: 4.5dB

- Wind Survival Speed: 180 km/hr (112 miles/hr)
- Lightning Protection: DC ground
- Color: Gray-white
- Material: Fiberglass
- Housing Material: PCB mirco stripe
- Weight: 400g (14 oz)
- Temperature: -40°C ~ 80°C (-40°F ~ 176°F)
- Humidity: 100% @ 25 oC (77 oF)
- Dimensions: 520 x 62 x 79.5mm (20.47 x 3.13 x 2.44 in)
- Warranty: 1 Years
- Certification: CE, FCC

TEW-OA14DK- 14dBi Outdoor Directional Antenna with 6ft. (2M) Reverse SMA Cable (with bracket mounting kit)

TRENDnet's TEW-OA14DK Outdoor Directional Antenna provides long distance point-to-point connection for your wireless network. As an optional antenna for your IEEE 802.11b/g 2.4GHz wireless network equipments, you can install it outdoor for connecting a network up to miles away, or install it in a building to blast through obstructions by mounting it on the ceiling, wall, or outdoor tower. Unleash the power of your wireless products with TRENDnet's TEW-OA14DK antenna.

Specifications

Hardware

- Frequency range: 2400 MHz ~ 2500MHz
- Gain: 14 dBi
- VSWR: 1.4 : 1 Max.
- Polarization: Vertical
- 3dB beamwidth / H-plane: 30°
- 3dB beamwidth / E-plane: 30°
- Front to Back Ratio: 15 dBi



Down tilt: 0°  
Power Handling: 50 W (cw)  
Impedance: 50 Ohms  
Connector Lead Cable: ULA-198, 32cm(12.6in.)  
Connector Type: N-Type, female  
Antenna Cable: 50 Ohms with male N-Type and Reversed SMA female Connectors  
Wind Survival Speed: 180 km/hr (112 miles/hr)  
Temperature: -30 °C ~ 80 °C (-22 °F ~ 176 °F)  
Humidity: 100% @ 25 °C (77 °F)  
Lightning Protection: DC ground  
Color: Gray-white  
Material: ABS/UV resistant, Fire retardant  
Housing material: Galvanized Steel, Fire retardant  
Weight: 825 g (19 oz.)  
Dimensions: 240 x 240 x 69.5 mm (9.5 x 9.5 x 2.7 in)  
Warranty: 1 Years  
Certification: CE, FCC

#### TEW-OA24D - 24dBi Outdoor Directional Antenna

TRENDnet's TEW-OA24D 24dBi High Gain Outdoor Reflector Grid Antenna provides extended coverage range for your existing 802.11b or 802.11g Wireless Local Area Network (WLAN). TEW-OA24D comes with female N-type antenna connector; with optional conversion cable (N-type to reverse SMA), you can connect the antenna to TRENDnet's TEW-303PI, TEW-310APBX, TEW-403PI, TEW-410APB, TEW-411BRP or any other 2.4 ~ 2.5GHz wireless device with male Reverse SMA connector. TEW-OA24D is weatherproofed; you can mount it outdoor on the wall or on a pole. The antenna also has a tilted bracket for antenna alignment. Expand the power of your wireless product with TRENDnet's TEW-OA24D

#### Specifications

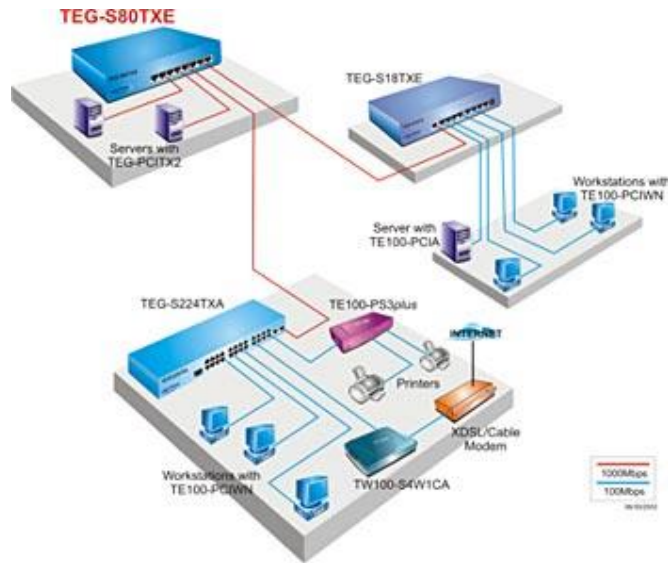
##### Hardware

Frequency range: 2.4GHz ~ 2.483GHz  
Gain: 24 dBi  
VSWR: 1.5 : 1 Max  
Polarization: Linear, Vertical  
HPBW Vertical: 14°  
HPBW Horizontal: 10°  
Front to Back Ratio: > 30 dB  
Up/Down tilt: 60°  
Power Handling: Max. 100 W (cw)  
Impedance: 50 Ohms  
Connector Lead Cable: RG-58/u, 30 cm (12 inches)  
Connector Type: N-Type Female  
Survival Wind Speed: 216 Km/hr (134 Miles/hr)  
Temperature: -40 oC ~ 80 oC (-40 oF ~ 176 oF)  
Humidity: 100% @ 25 oC (77 oF)  
Lightning Protection: DC Ground  
Antenna Type: Directional, Grid type  
Mount Style: Pole end mounting. Pole diameter 50mm (2 inches) max.  
Weight: 3.5 Kg (7.7 lb)  
Dimensions (WxHxD): (Final product) 100 x 60 x 50 mm(39.5 x 23.5 x 19.5 inches)

สนใจ สอบถามรายละเอียดเพิ่มเติม กรุณาติดต่อ  
บริษัท เอส-วัน เทคโนโลยี จำกัด โทร. 02-991-6962 มือถือ 06-789-7434  
Email: [kitti@sone.co.th](mailto:kitti@sone.co.th)



## TEG-S80TXE 8-Port 10/100/1000Mbps Copper Gigabit Switch

**8-Port 10/100/1000Mbps Copper Gigabit Switch**

TRENDnet's TEG-S80TXE Copper Gigabit Ethernet Switch with External Power Supply consist of eight 10/100/1000Mbps Copper Gigabit Ethernet ports with Auto-negotiation and Auto-MDIX features. The Switch offers a reliable and affordable LAN solution to meet immediate bandwidth demand. Users can connect Server(s) to the Gigabit port(s) to increase network performance or cascade Copper Gigabit Switches together to create high-bandwidth Gigabit backbones. TRENDnet's TEG-S80TXE provides simple migration, scalability and flexibility to handle new applications and data types, making it a highly reliable and cost effective solution for high-speed network connectivity

**Features**

- 8 x 10/100/1000Mbps Auto-Negotiation, Auto-MDIX Gigabit Ethernet Ports
- Full/Half-duplex transfer mode for 10/100Mbps, Full-Duplex mode for 1000Mbps
- Store-and-Forward switching method
- Wire-speed reception and transmission
- IEEE 802.3x flow control for full-duplex mode
- Back pressure flow control for half-duplex mode
- Integrated address Look-Up engine, supports 4K MAC addresses
- Built-in 128KB RAM Buffer
- Extensive front-panel diagnostic LEDs
- External Power Supply
- Sturdy metal housing
- 1-Year warranty

**Specifications****Hardware**

- Standards: IEEE 802.3 10Base-T Ethernet, IEEE 802.3u 100Base-TX Fast Ethernet
- IEEE 802.3ab 1000Base-T Copper Gigabit Ethernet, IEEE 802.3x Flow Control
- Data Transfer Rate: Ethernet: 10Mbps (Half-Duplex), 20Mbps (Full-Duplex)
- Fast Ethernet: 100Mbps (Half-Duplex), 200Mbps (Full-Duplex),
- Gigabit Ethernet: 2000Mbps (Full-Duplex)
- Cabling: Ethernet: 2-pair UTP/STP Cat. 3,4,5, 100 meters max.
- Fast Ethernet: 2-pair UTP/STP Cat. 5, 100 meters max.
- Gigabit Ethernet: 4-pair UTP/STP Cat. 5, 100 meters max.
- Protocol: CSMA/CD
- Topology: Star
- Data RAM Buffers: 128KB per Device
- Filtering Address Table: 4K entries per device
- Dagnostic LEDs: Power, Link/ACT, 100Mbps, 1000Mbps
- Power Consumption: 10.5 Watts; 5V DC, 2.4A External Power Adapter
- Dimensions (WxDxH): 190 x 120 x 38mm (7.5 x 4.7 x 1.5 inch)
- Weight: 0.77kg (1.7lb)



Temperature: Operating: 0° ~ 40° C (32° ~ 104° F)  
Storage: -10° ~ 55° C (14° ~ 131° F)  
Humidity: 5% to 95% non-condensing  
Certifications: FCC Class A, CE mark Class A, VCCI-A

Benefits

Performance: Each port provides 1000Mbps Gigabit connection to Power Server or another Gigabit Switch.  
Flexibility: All ports automatically negotiate 10/100/1000Mbps network speed. All ports support Auto-MDIX media type detection (connect with either straight through or a crossover cable).  
Expandability: Uplink to other Gigabit Switches to create Gigabit backbones.  
Effectiveness: Provides Gigabit Performance at an affordable price

สนใจ สอบถามรายละเอียดเพิ่มเติม กรุณาติดต่อ  
บริษัท เอส-วัน เทคโนโลยี จำกัด โทร. 02-991-6962 มือถือ 06-789-7434  
Email: [kitti@sone.co.th](mailto:kitti@sone.co.th)



## TEW-T1 2.4 GHz Wi-Fi Detector



อุปกรณ์ที่ถูกแบบมาเป็นพิเศษสำหรับตรวจสอบสัญญาณการใช้งานของอุปกรณ์ไร้สายต่างๆ ที่ใช้งานย่านความถี่ 2.4 GHz ตรวจจับอุปกรณ์ไร้สายต่างๆ ทั้งอุปกรณ์ Wi-Fi 802.11b/g, Cordless phone, Microwave oven และ Wireless Hidden Camera ช่วยให้ผู้บริหารระบบเครือข่ายสำรวจสภาพแวดล้อมของระบบและค้นหาอุปกรณ์ที่มีสัญญาณรบกวนกันได้ง่ายดาย ตรวจจับความคมชัดของสัญญาณ Wi-Fi พร้อมการคอนฟิกรูเช่นการทำงานได้ง่าย มีไฟแสดงระดับสัญญาณและแหล่งกำเนิดสัญญาณได้

**Features**

TRENDnet TEW-T1 2.4 GHz Wi-Fi Detector อุปกรณ์ที่ถูกแบบมาเป็นพิเศษสำหรับตรวจสอบสัญญาณการใช้งานของอุปกรณ์ไร้สายต่างๆ ที่ใช้งานย่านความถี่ 2.4 กิกะเฮิรตซ์ (GHz) ตรวจจับอุปกรณ์ไร้สายต่างๆ ทั้งอุปกรณ์ Wi-Fi 802.11b/g, Cordless phone, Microwave oven และ Wireless Hidden Camera ช่วยให้ผู้บริหารระบบเครือข่ายสำรวจสภาพแวดล้อมของระบบและค้นหาอุปกรณ์ที่มีสัญญาณรบกวนกันได้ง่ายดาย ตรวจจับความคมชัดของสัญญาณ Wi-Fi พร้อมการคอนฟิกรูเช่นการทำงานได้ง่าย มีไฟแสดงระดับสัญญาณและแหล่งกำเนิดสัญญาณได้ ตรวจจับคลื่นได้อย่างรวดเร็วโดยใช้การสแกนเพียง 0.5 วินาที มีระบบการสแกนทั้งแบบ Automatic-Alert, Automatic-Silent และ Manual Scan modes ตั้งระบบการสแกนแบบอัตโนมัติได้ 30 วินาที มีไฟแจ้งเมื่อแบตเตอรี่ใกล้จะหมด สนับสนุนระยะการตรวจสอบตั้งแต่ 20 ถึง 45 เมตรภายในอาคารและ 60 -90 เมตรภายนอกอาคาร (ขึ้นอยู่กับสภาพพื้นที่) ขนาดเล็กเพียง 59 x 15 x 102 มิลลิเมตร น้ำหนัก 65 กรัม จึงพกพาสะดวก

**สนใจ สอบถามรายละเอียดเพิ่มเติม กรุณาติดต่อ  
บริษัท เอส-วัน เทคโนโลยี จำกัด โทร. 02-991-6962 มือถือ 06-789-7434  
Email: [kitti@sone.co.th](mailto:kitti@sone.co.th)**