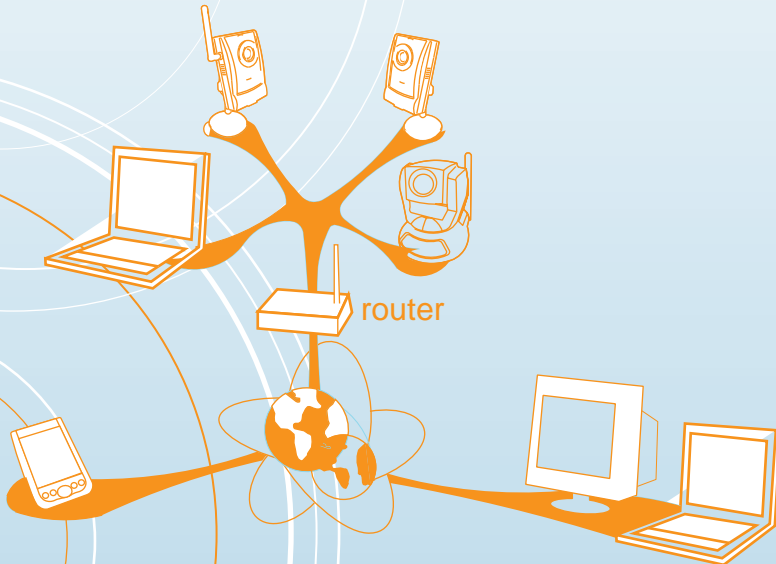


fmc-202v/202g
fmc-212v/212g



technical specifications

power	DC 5V, 1A
image sensor	RGB VGA 1/4 inch CMOS, AES AGC AWB
video	MPEG-4 Part2 (ISO/IEC 14496-2) with motion detection
resolution	VGA(640x480), QVGA(320x240), QQVGA(160x120)
bandwidth	64k, 128k, 256k, 512k, 768k, 1M, 1.2M, 1.5M bps
frame rate	5, 10, 15, 20, 25, 30 fps
audio	MPEG2 audio, AMR-NB for 3gpp/ISMA(RTSP streaming)
light sensitivity	1.9 Lux (202v/g) 1.0 lux (IR led off) 0 lux (with 10 meters IR led on) automatically turn on IR led in low light environment (212v/g)
lens	3.2mm, F2.0, viewing angle: 60.3°, fixed iris (202v/g) 4.5 mm, F1.9, viewing angle: 55.6°, fixed iris, focus range: 30 cm to infinity, Day & night IR lens, Motor controlled IR-cut filter (212v/g)
processors	RISC CPU, Hardware video processing and compression
network interface	Ethernet 10/100BaseTX, Auto-MDIX, RJ-45
protocols	IPv4, HTTP, TCP, ICMP, RTSP, RTP, UDP, RTCP, SMTP, SNTP, DHCP, ARP, DNS, PPPoE, etc.
alarm and event	Events triggered by video motion detection
indicators	1 LED for internet, 1 LED for Ethernet(LAN)
dimensions	125x75x35 mm
operation conditions	0-50 °C, Humidity 20-80% RH(non-condensing)
system requirements	Pentium4(or AMD) CPU 1.0 GHz or more / 512 Mb DRAM
software	16 Ch Video management software-Camview for video access and multi-camera management
approvals	EMC - CE, FCC Part 15 Subpart B Class B/Wireless RF - CE, FCC Part 15 Subpart C/Power supply: CE, FCC, UL, EN 60950

for wireless

wireless interface	IEEE 802.11g 6-54 Mbps / IEEE 802.11b 1-11 Mbps
transmit power	14.5dBm typical @ 802.11g / 14.5dBm typical @ 802.11b
receiver sensibility	54Mbps: Typical - 73dBm @ 10% PER / 11Mbps: Typical - 86dBm @ 10% PER / Antenna gain:1.8 dBi